



Arkwrights, Harlow, CM20 3LT

Geoffrey Matthew Estates are delighted to offer this very well presented, one bedroom, second floor apartment in the popular residential area of Arkwrights. Offering spacious living accommodation and benefitting from a private balcony. The property is ideally located to access all of the local amenities.

Early viewings are highly recommended!

Offers In The Region Of £170,000

Arkwrights, Harlow, CM20 3LT



- One Bedroom
- Private Balcony
- Second Floor
- Would Generate Competitive Yield If Rented!
- Spacious Living Accomodation

Entrance Hall

Lounge

22'3 x 7'5 (6.78m x 2.26m)

Kitchen

5'7 x 10'7 (1.70m x 3.23m)

Bedroom

12'6 x 10'8 (3.81m x 3.25m)

Bathroom

5' x 6'10 (1.52m x 2.08m)

Balcony

Agents Notes

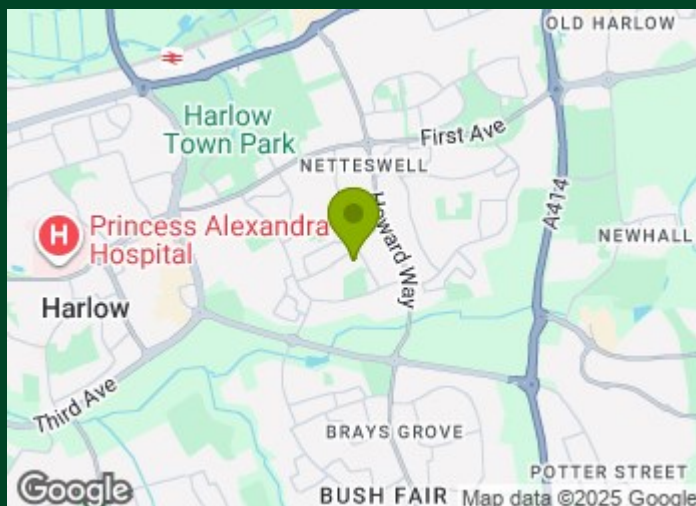
We are advised;

Approx 88 years remaining on the lease

Approx £1116 per annum service charge

£10 Per annum Ground Rent

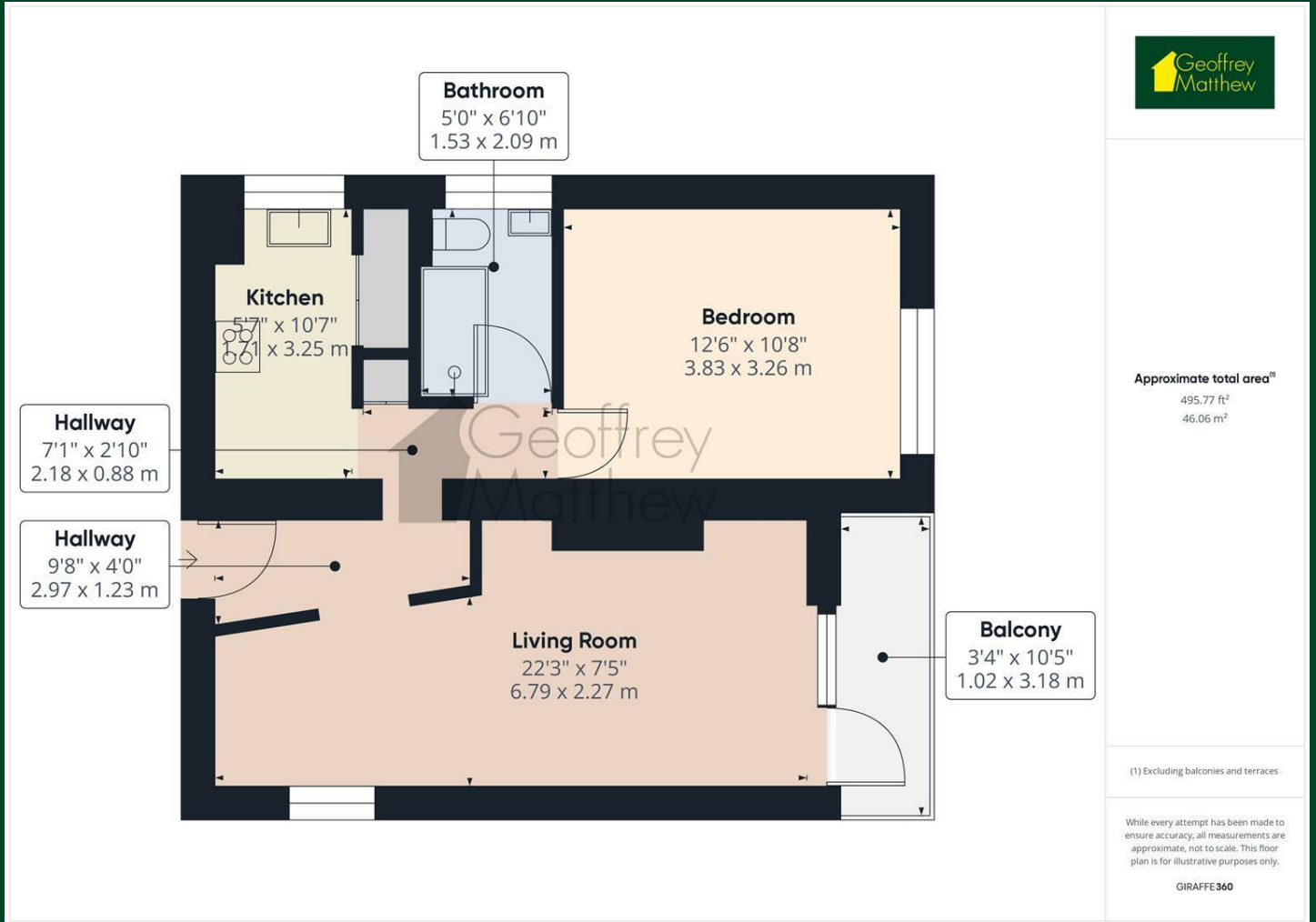
Please be aware this property is subject to an upcoming Section 20/Major Works bill.



Directions



Floor Plan



Council Tax Details

Harlow Band A

These particulars, whilst believed to be accurate are set out as a general outline only for guidance and do not constitute any part of an offer or contract. Intending purchasers should not rely on them as statements of representation of fact, but must satisfy themselves by inspection or otherwise as to their accuracy. No person in this firm's employment has the authority to make or give any representation or warranty in respect of the property.

Energy Efficiency Rating		Environmental Impact (CO ₂) Rating	
Current	Potential	Current	Potential
Very energy efficient - lower running costs (92 plus) A		Very environmentally friendly - lower CO ₂ emissions (92 plus) A	
(81-91) B		(81-91) B	
(69-80) C		(69-80) C	
(55-68) D		(55-68) D	
(39-54) E		(39-54) E	
(21-38) F		(21-38) F	
(1-20) G		(1-20) G	
Not energy efficient - higher running costs		Not environmentally friendly - higher CO ₂ emissions	
England & Wales	EU Directive 2002/91/EC	England & Wales	EU Directive 2002/91/EC